

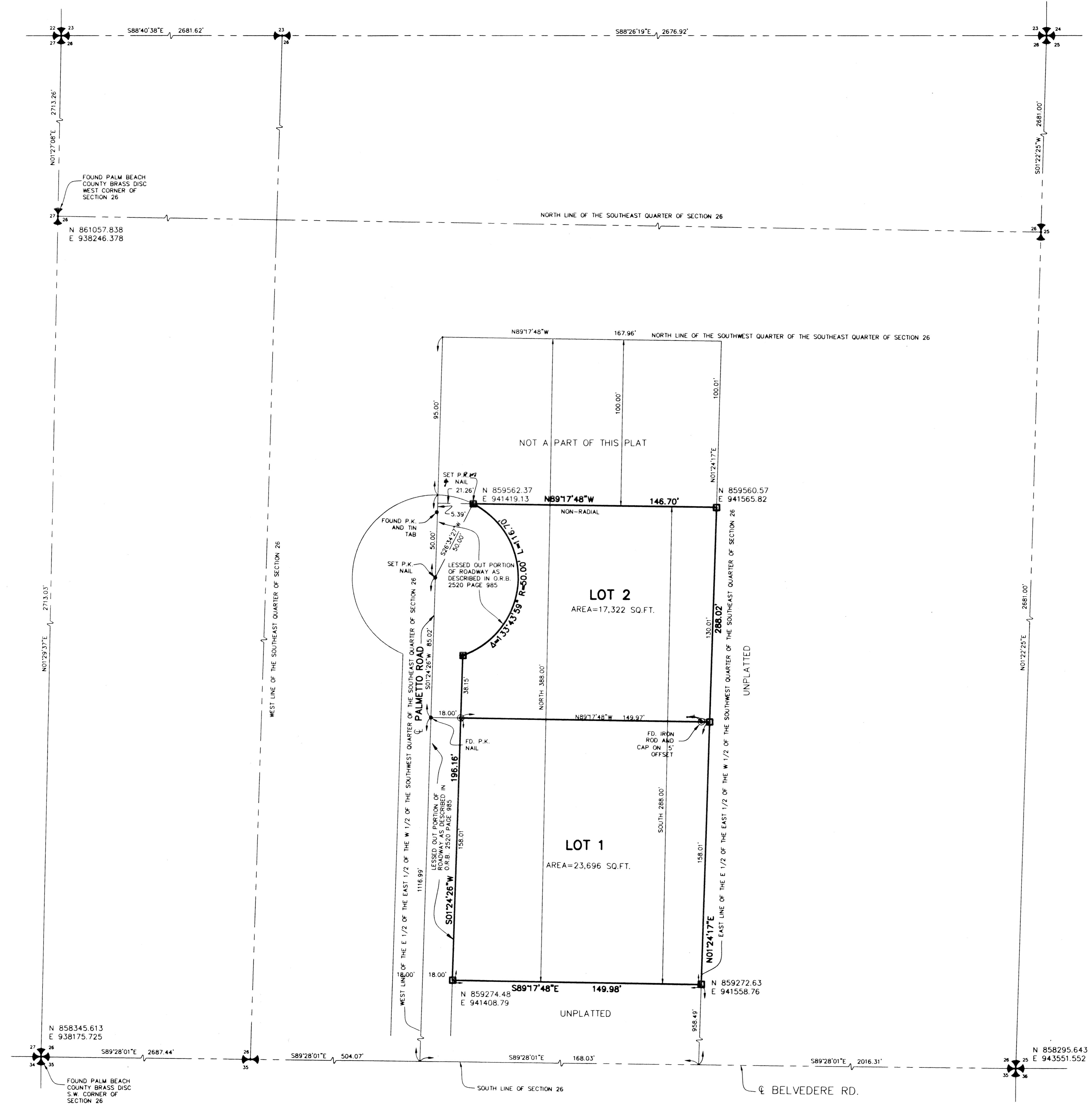
KROLLS

Being a part of the Southeast Quarter of Section 26,
Township 43 South, Range 42 East, Palm Beach
County, Florida.
TOWN OF HAVERHILL, FLORIDA

SHEET 2 OF 2
MARCH, 2002

LEGEND

- E EAST
- L ARC LENGTH
- N NORTH
- O.R.B. OFFICIAL RECORD BOOK
- POB POINT OF BEGINNING
- POC POINT OF COMMENCEMENT
- R RADIUS
- R.O.W. RIGHT-OF-WAY
- R.P.B. ROADWAY PLAT BOOK
- S SOUTH
- U.E. UTILITY EASEMENT
- ⊕ CENTER LINE
- Δ DELTA ANGLE
- ⊠ PERMANENT REFERENCE MONUMENT



KROLLS

Engineers • Surveyors • Mappers

DATE	12/01/2001	S H E E T	2/2
SCALE	1"=30 FEET		
CAD FILE	00525PL.dwg	JOB NO. 00525.02	
DISK PROJECT	00525		
DRAWN	SFRN STAFF		
CHECKED	G. RAYMAN		

1201 BELVEDERE ROAD, WEST PALM BEACH, FLORIDA 33405
PH (561)655-1151 • FAX (561)832-9390 • WWW.SFRNIC.COM